

Refining Risk MAP

Ginger Evans, CFM, GISP
Amanda Wallace, GISP



August 26, 2015

Our Goal Mission

Through collaboration with State, Local, and Tribal entities, Risk MAP will deliver quality data that increases public awareness and leads to action that reduces risk to life and property



The Issue

A gap in communication exists between the understanding of the Risk MAP products and how they can be leveraged for local use.

Agenda

1 Improve Communication

2 Improve Education and Coordination

3 Improve Resource Access

4 Questions


1 Improve Communication

“The two words 'information' and 'communication' are often used interchangeably, but they signify quite different things. Information is giving out; communication is getting through.” – Sydney J. Harris (American journalist)

NFIP

Community Feedback

- What is the NFIP?
- Who can purchase flood insurance?
- Risk outside of floodplain?
- Grandfathering/NFIP reform?

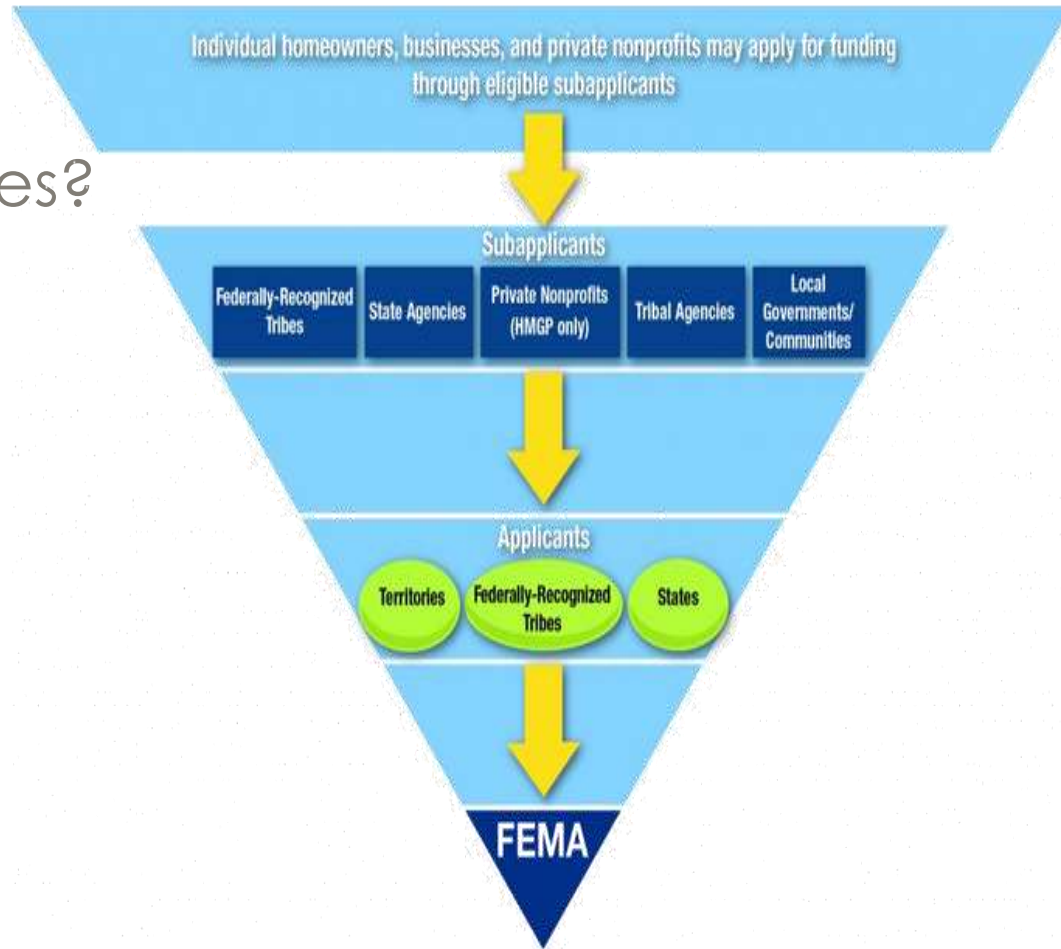


“Patty said flood insurance was not available to anyone in the area because they weren't considered to be in a flood zone”
-Lexington Herald Leader

Project Funding Opportunities

Community Feedback

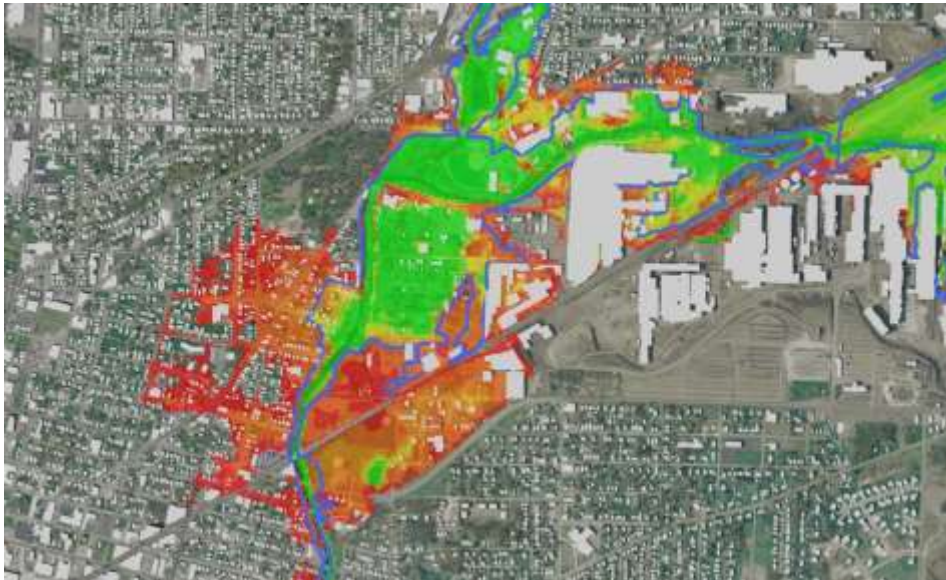
- Funding Opportunities?
- Who is Eligible?
- Assistance Grant Applications?



FEMA Resources

Community Feedback

- How do we get the Risk MAP Products?
 - (MSC, Local Officials)
- How to we use the Risk MAP products for mitigation?



Refinement

- Provide information multiple ways
 - Meetings
 - Emails
 - Follow up visit
- Communication with a Specialist
 - State NFIP
 - Outreach (KDOW)
 - FEMA Contractor
- Training opportunities about grant/funding sources with the Kentucky Emergency Managers



2 Improve Education and Coordination

“Education is the most powerful weapon which you can use to change the world.”

– Nelson Mandela

Risk MAP Tools

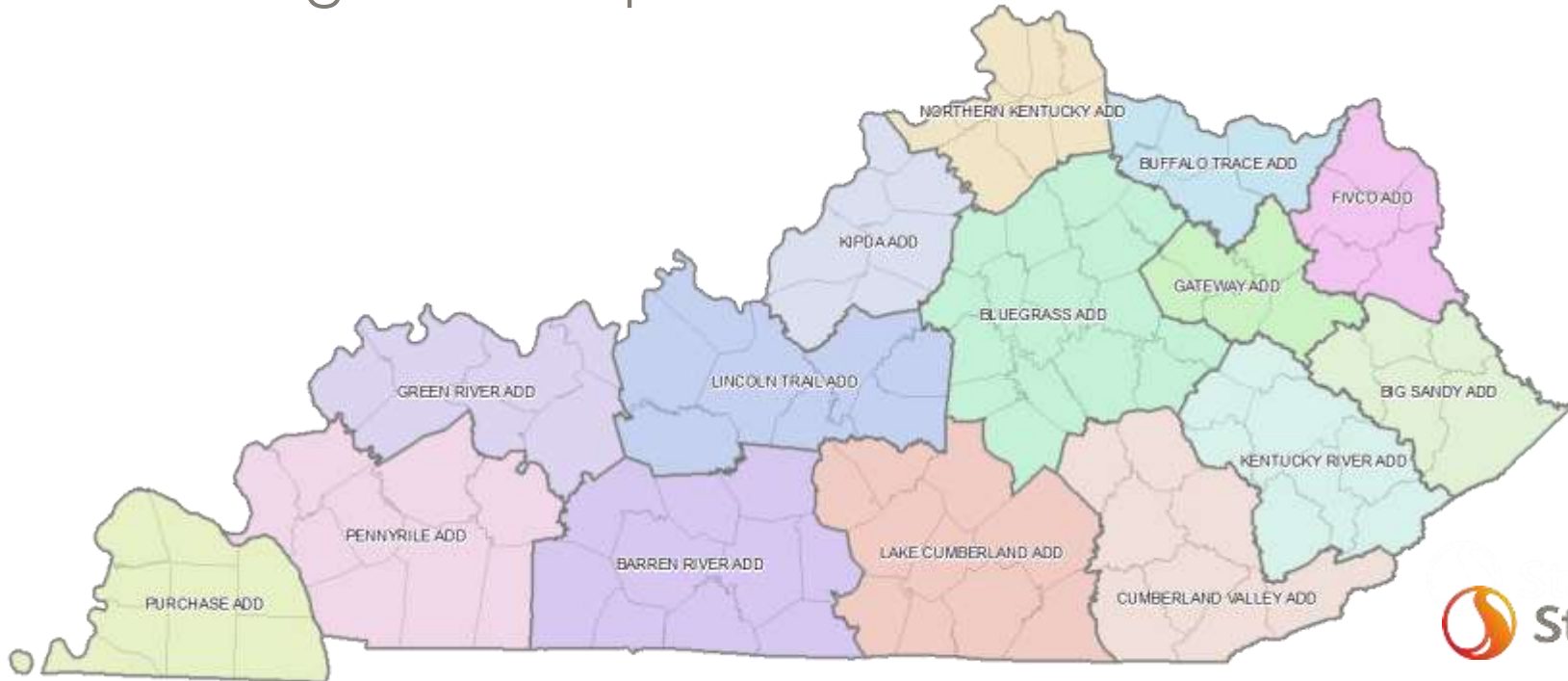
Community Feedback

- How do we use the tools? (GIS Products)
- What's the advantage? (More Accurate)
- Limitations?
- Training opportunities?

Area Development Districts (ADDs)

Community Feedback

- Are they getting the information?
- Targeted outreach to ADDs
- Using RiskMAP products for HMP?



Community Rating System (CRS)

Community Feedback

- What is CRS?
- Qualifications?
- Advantages?
- Application Process?
- Annual renewal for status?

CREDIT POINTS	CLASS	PREMIUM REDUCTION SFHA*	PREMIUM REDUCTION NON-SFHA**
4,500+	1	45%	10%
4,000 – 4,499	2	40%	10%
3,500 – 3,999	3	35%	10%
3,000 – 3,499	4	30%	10%
2,500 – 2,999	5	25%	10%
2,000 – 2,499	6	20%	10%
1,500 – 1,999	7	15%	5%
1,000 – 1,499	8	10%	5%
500 – 999	9	5%	5%
0 – 499	10	0	0

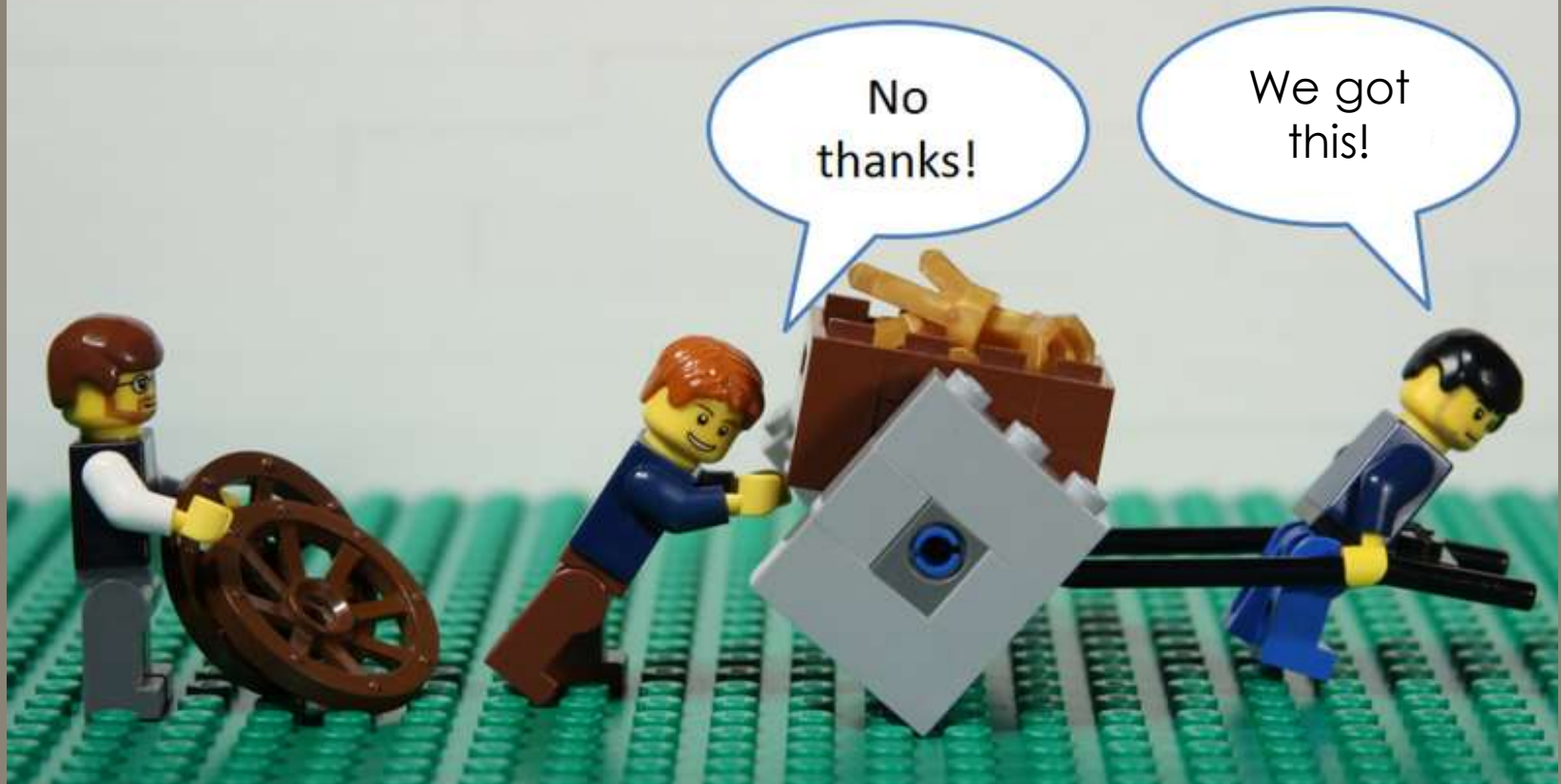
Community Follow Up

Refinement

- Meet more frequently
- One on one meetings with the ADDs
- More Follow-up with Communities and local officials after RiskMAP
- Contact Christina Groves for CRS questions

3 Improve Resource Access

Are you aware of the resources around you?



Available Resources

- FEMA Map Service Center (Regulatory/Non-Regulatory Products)
- Coordinated Needs Management Strategy (CNMS) Viewer
- Mitigation Action Tracker (MAT)



A screenshot of the FEMA Flood Map Service Center website. The page features the FEMA logo, navigation tabs for 'Plan, Program & Mitigation', 'Disaster Response', 'Recovery & Resilience', 'Topics & Audiences', 'Risk, Assessment, & Resilience', and 'About FEMA'. Below the navigation is a search bar and a 'Flood Map Service Center' section. A map is displayed with a 'Welcome to FEMA's Flood Map Service Center' message. To the right of the map is a 'Flood Risk' legend with color-coded boxes: Very Low (light green), Low (yellow), Medium (orange), High (red), and Very High (dark red/purple). The legend is titled 'Flood Risk' and includes a search bar and a 'Search' button.

FEMA Map Service Center (MSC)

The screenshot displays the FEMA Map Service Center (MSC) website interface. The browser address bar shows the URL <https://msc.fema.gov/portal>. The page features the FEMA logo and navigation menus for Plan, Prepare & Mitigate; Disaster Survivor Assistance; Response & Recovery; Topics & Audiences; Blog, Newsroom, Videos & Photos; and About FEMA. The main content area is titled "Flood Map Service Center" and includes a search form with the following fields: State (OHIO), County (MIAMI COUNTY), Community (MIAMI COUNTY ALL JURISDI), Jurisdiction Name or FEMA ID, and Product ID. Below the search form are fields for "Map Service Center Posting Date Range" (Date From and Date To) and buttons for "Search" and "Clear All Fields".

The search results are displayed under the heading "Search Results for MIAMI COUNTY ALL JURISDICTIONS". A "Please Note" section explains that searching by county displays all products for all communities within the county. The results are categorized as "Effective Products (29)", including "FIRM Panels (7)" and "FIS Reports (2)". A table lists the following products:

Product ID	Effective Date	Size	Download
39057CV001A	03/17/2011	1MB	DL
39057CV002A	03/17/2011	5MB	DL
3912PCV000A	05/16/2012	1MB	DL
39109CV000A	06/02/2011	1MB	DL
39113CV000A	01/08/2005	44MB	DL

Additional categories listed include "LOMIC (156)", "NFHL Data-State (1)", and "NFHL Data-County (6)".

At the bottom of the page, an "Announcements" section states: "MSC R3.0 SP04 Now Deployed - The MSC has released a service pack aimed at making a number of refinements and adding some new features".

Coordinated Needs Management Strategy (CNMS)



<https://msc.fema.gov/cnms/>

Mitigation Action Tracker (MAT)

- Identify areas of mitigation interest (AoMI)
- Capture data to leverage future planning or other risk reduction efforts

LinkedIn



<https://mat.msc.fema.gov/About.aspx>

Community Hazard Assessment and Mitigation Planning System (CHAMPS)



[How to Build a Community Profile](#)



[How to Build and Conduct Assessments](#)



[How to Write a Plan](#)



[How to Search for Funding](#)



[How to Apply for and Manage Projects](#)

Community Profile

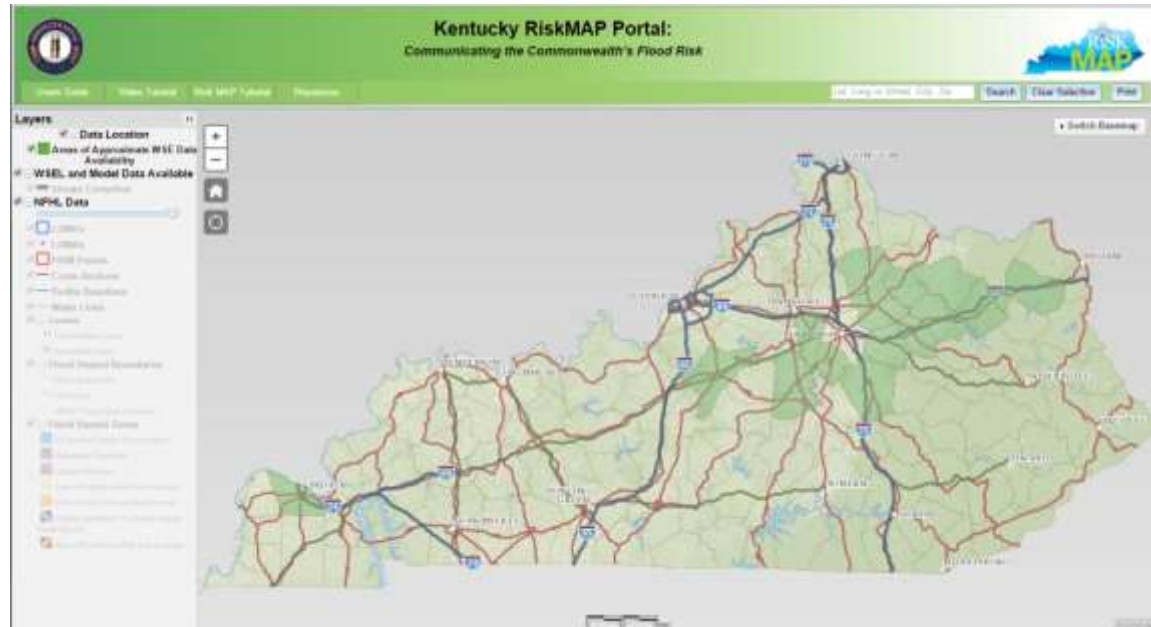
The screenshot displays a map titled "Infrastructure" with various icons representing different types of infrastructure. A pop-up window is open over a fire station icon, providing the following details:

Infrastructure Type:	Fire Station
Name:	CLARK COUNTY FIRE STATION
Phone Number:	502-555-5555
Description/ Location:	222 Fulton Road Winchester, KY 40391
Critical Infrastructure:	Yes
Last Updated:	05/21/2012 11:07 a.m.
Updated by:	ben.anderson

iFlood

Disclaimer: data and functionality under construction

- 16 counties
- Zone A Data
- NFHL Data
- Model & Hydraulic Report Download



- *Double check KDOW Regarding Zone A values*

Questions?