

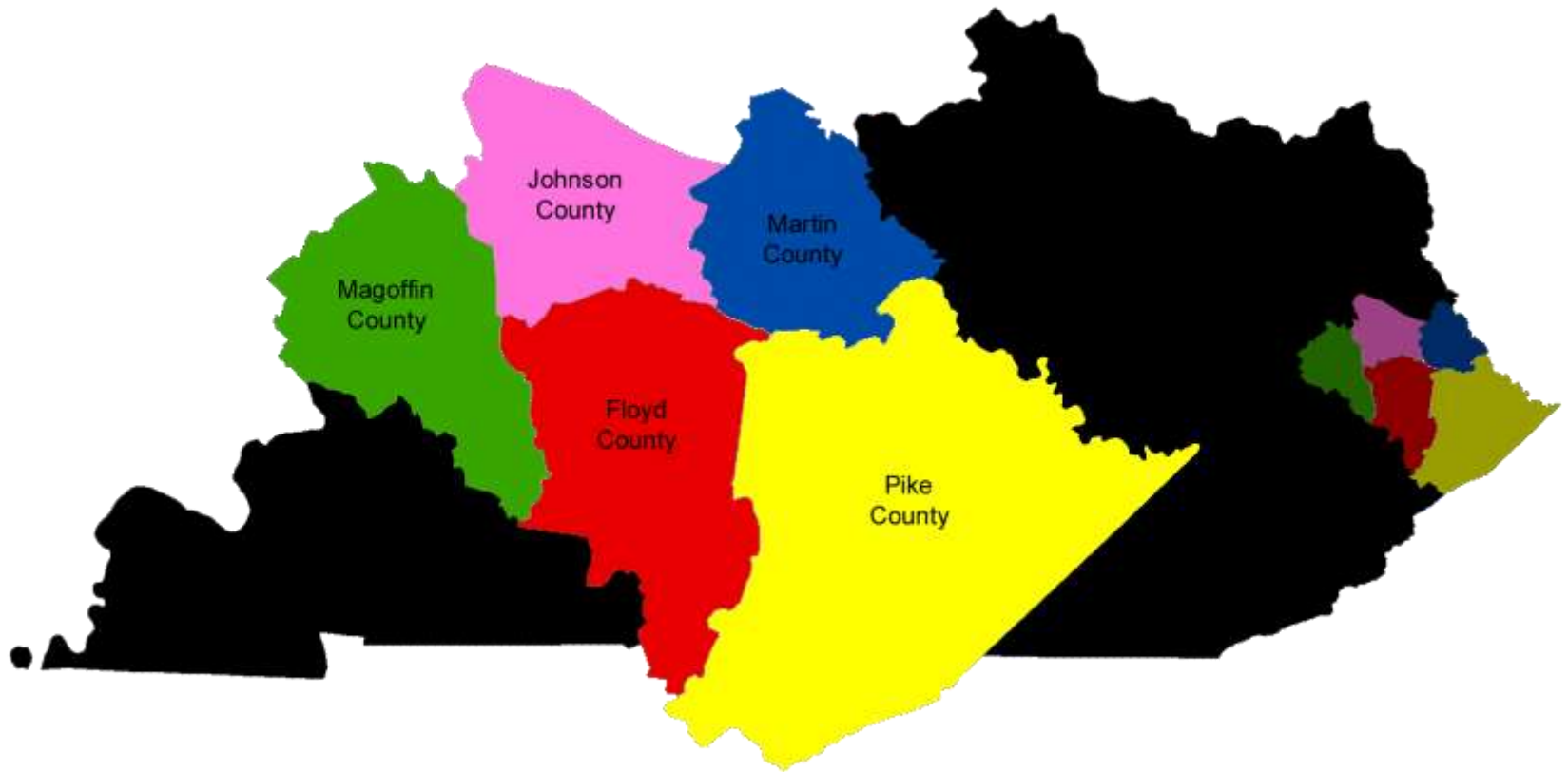
# ***After the Storm- Building a Resilient Magoffin County***



2015 KAMM Conference- Lake  
Cumberland State Resort Park

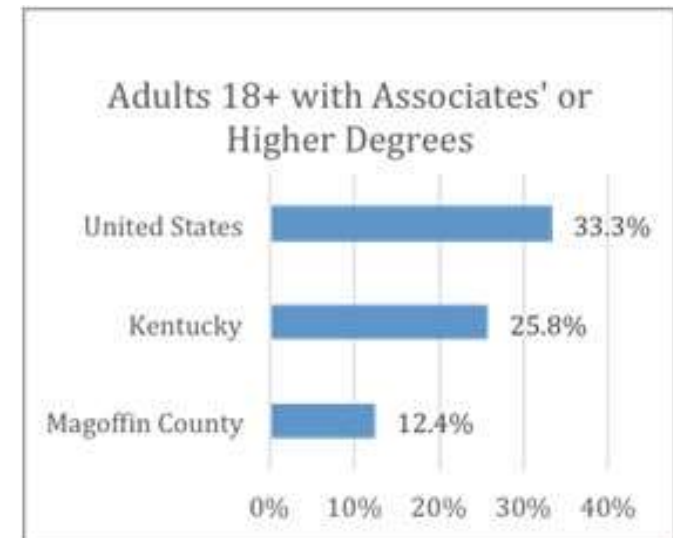
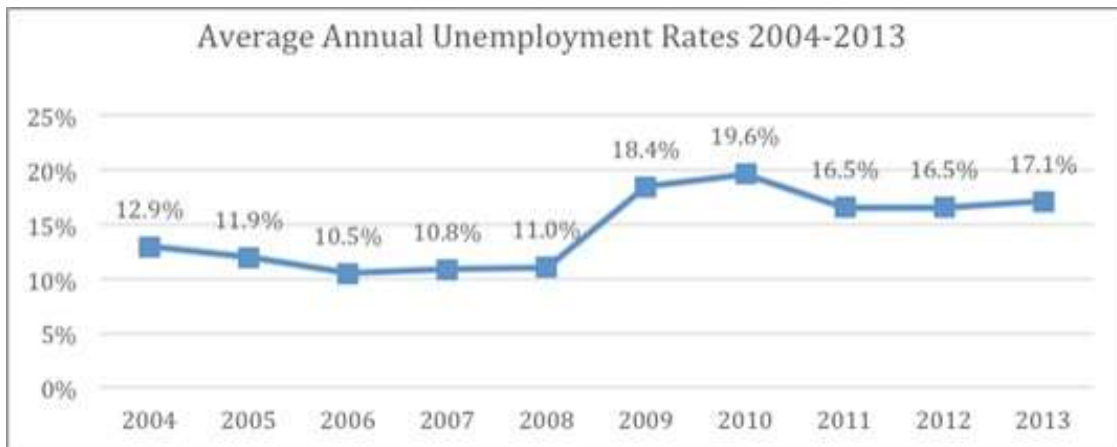
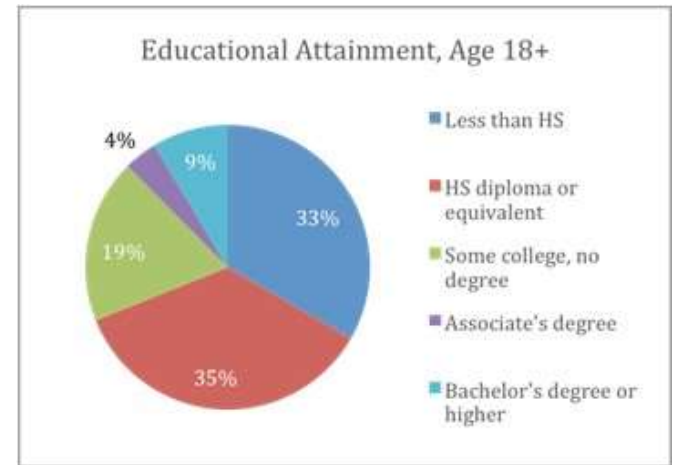


# Magoffin County



# Magoffin County

	Magoffin County	Kentucky
Median household income	\$25,461	\$42,610
Per capita income	\$14,505	\$23,210
Living in Poverty	33.5%	18.6%
Unemployment Rate	17.1%	7.9%

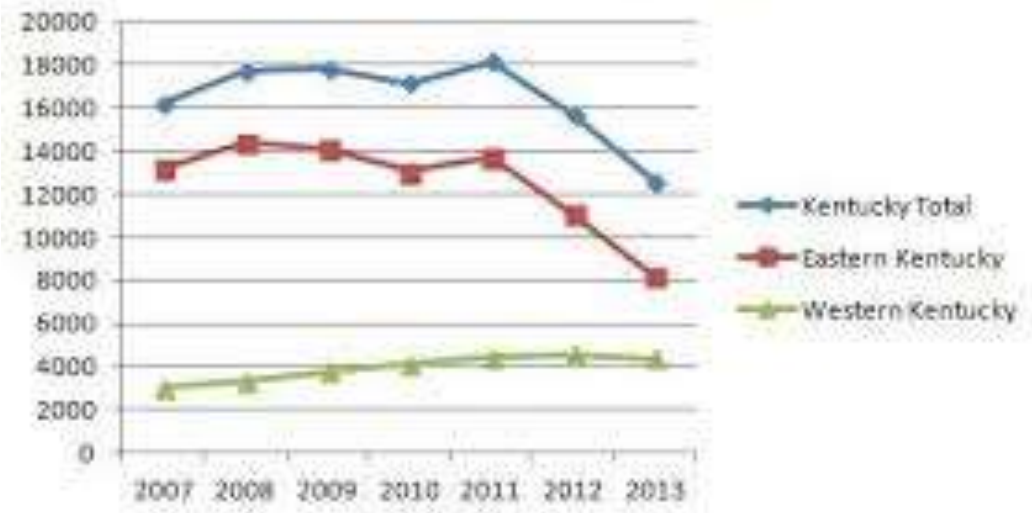


# Why Plan?

Economic Resiliency: The ability of an economy to recover from or adjust to the effects of adverse shocks to which it may be inherently exposed.

- Economic Recession
- High Unemployment and Poverty
- Decrease in Coal Production-Severance Tax and Loss Jobs
- Natural Disasters

Coal Employment (average)





# The Storm

- March 2, 2012- EF-3 Tornado hit Salyersville in Magoffin County
- No fatalities but widespread damage to house, businesses and school



# Economic Development Opportunities

- Industrial Park Property
- Mountain Parkway Expansion
- Dawkins Line Rail-Trail Project=Tourism
- Disaster Recovery
- SOAR Initiative



# Plan Components

- Quality of Life Improvements
  - Health
  - Housing
  - Education
  - Natural Environment
  - Economic
- Economic Diversification (Target Industries)
- Small Business and Entrepreneurship
- Tourism Development
- Commercial and Industrial Development
- Workforce Development
- Energy Efficiency
- Disaster Mitigation



# Disaster Planning





# Emergency Management Response

Disaster Recovery Center- FEMA  
Emergency Management Plan  
More than 10M in disaster Relief

- 4,800 storm survivors
- \$5.7M in Housing Assistance
- 2,200 sustained damage/650 were destroyed
- 1,300 households received FEMA grants for temporary housing
- \$3M in low-interest loans from Small Business Administration



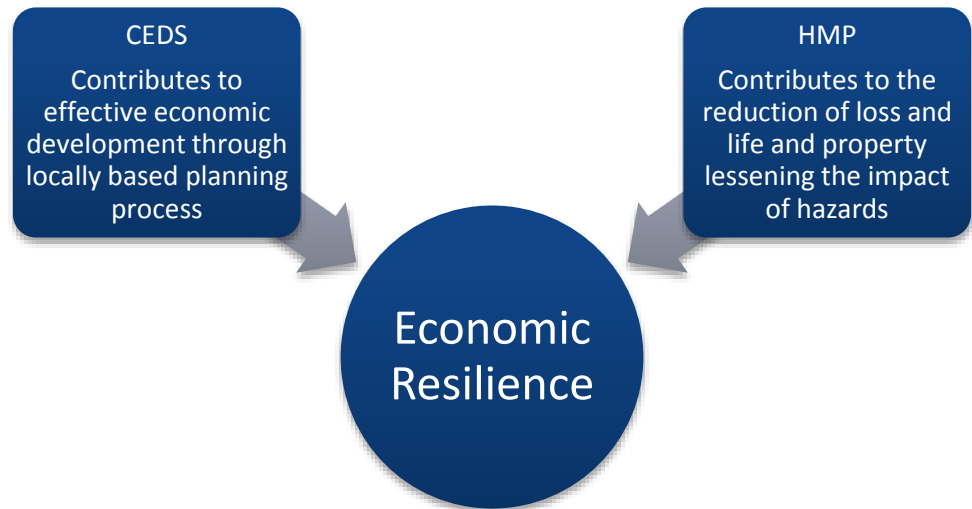
# Economic Resilience

## WHY?

- To protect people, infrastructure and businesses
- Reduce impacts of hazards and losses from natural disasters.

## How?

- Understanding risks and be proactive to move into action.
- Aligning Programs: Hazard Mitigation and Comprehensive Economic Development Strategies.



# Disaster Declaration History

<b>FEMA DISASTER</b>	<b>YEAR</b>	<b>INCIDENT TYPE</b>
FEMA-DR-4057	2012	Severe Storms, Tornado, Flooding and Mudslides
FEMA-DR-4008	2011	Severe Storms, Tornado, Flooding and Mudslides
FEMA-DR-1912	2010	Severe Storms, Tornado, Flooding and Mudslides
FEMA-DR-1841	2009	Severe Storms, Tornado, Flooding and Mudslides
FEMA-DR-1818	2009	Winter Storm
FEMA-DR-3302	2009	Winter Storm
FEMA-DR-3231	2005	Hurricane (Katrina)
FEMA-DR-1523	2004	Severe Storms, Tornado, Flooding and Mudslides
FEMA-DR-1475	2003	Severe Storms, Tornado, Flooding and Mudslides
FEMA-DR-1454	2003	Winter Storm
FEMA-DR-1414	2002	Severe Storms, Tornado, Flooding and Mudslides
FEMA-DR-1407	2002	Severe Storms, Tornado, Flooding and Mudslides



# Risk Assessments



**\$350M**

Landslides



**\$67M**

Landslides



**\$342M**

Flooding



**\$253M**

Wildfires



**\$133M**

Drought



**\$342K**

Mine Subsidence

# Flooding



May 2009- \$18M FEMA Relief for 20 Counties in Eastern Kentucky



# What matters for Economic Development?

- Quality of Place and Quality of Life
  - Attract new businesses and talent
    - Recreational opportunities
    - Educational opportunities
    - Natural beauty and environment

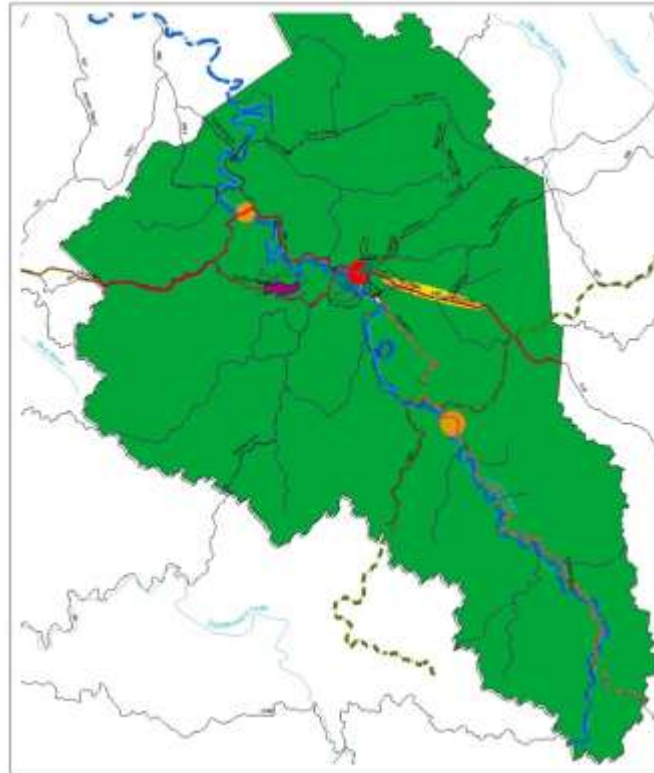


# Tourism Development

## Build on Strengths:

Utilize the Licking River and Dawkin's Trail as important linkages in the development of trails and tourism sites.

Kentucky Trail Town Initiative



## Magoffin County Tourism Development Plan



Salyersville Center



Royalton Node

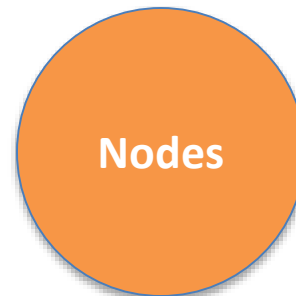


Gateway Node

Gateway Corridor



Center



Nodes

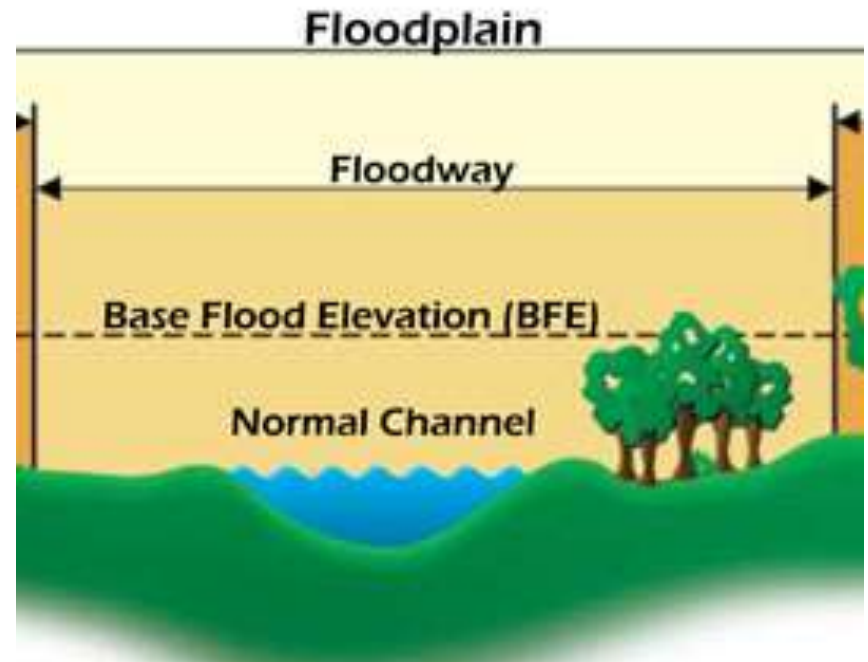


Gateway

# Mitigation Strategies

- Floodplain Ordinance
- Land Use Planning
  - Infrastructure Design-roads, utilities
  - Siting of buildings and infrastructure
  - Soil stabilization/erosion control
- Adopt building codes and permitting process
- Protection of natural riparian buffers and stream banks

## Characteristics of a Floodplain



# Small Business

- Economic goal to increase small business opportunities and entrepreneurship
- Majority of small businesses operate from a single location, making them more vulnerable compared to larger companies.
- Median cost of downtime for a small business due to extreme weather is \$3,000 per day.



# Business Continuity

- Integrating Local Businesses into Disaster Preparedness
- Business Continuity Template as a resource
  - Critical business activities and recovery action plan
  - Supply Chains
  - Communication
  - Business Records





# Questions?

EHI Consultants- Lexington

333 W. Vine Street

Suite 300

Lexington, KY 40507

T. 859-425-4881

[www.ehiconsultants.org](http://www.ehiconsultants.org)

EHI Consultants- Louisville

815 W. Market Street

Suite 304

Louisville, KY 40202

T. 503.992.3192